

FRP Long Step (2400mm x 324mm) Installation Instructions for Coverflex V3 Attachment

- Bolt fasteners
- Slotted Bracket
- FRP Long Step
- Adjustable Feet



1. Assess the ground surface

Before placing the step, take a moment to evaluate the ground condition outside your door. Look for any potential obstacles, uneven surfaces, or loose material that may affect stability. Remove any debris or obstacles that could pose a trip hazard.



2. Level the ground

If the ground surface is uneven, it is crucial to level it before placing the step. You can use a shovel or rake to remove excess dirt or fill in depressions to ensure the ground is compact and level to provide a solid foundation for the step.



3. Position the step

Once the ground is level, position the step. Align it parallel to the Coverflex and adjust all 8 feet to a height that creates a safe egress and ingress. Tighten locking nuts of threaded rod to secure foot height (FIG 1) and ensure step is level.

FIG 1

4. Step height

Block Qty	Block height 90mm	Chasis height	Total height - FFL	Risers	Riser heights
2	180	150	330	2	165
3	270	150	420	2	210

5. Securing step to Coverflex (2.4-meter end only)

(FIG 2), Align the slotted bracket with the provided hole in the steel subframe (FIG 3) using the thick heavy washer and bolts provided and secure in place into place

6. Test the stability of the step

If the step doesn't feel level or is unstable, then return to step 1. Repeat until step is level and stable.

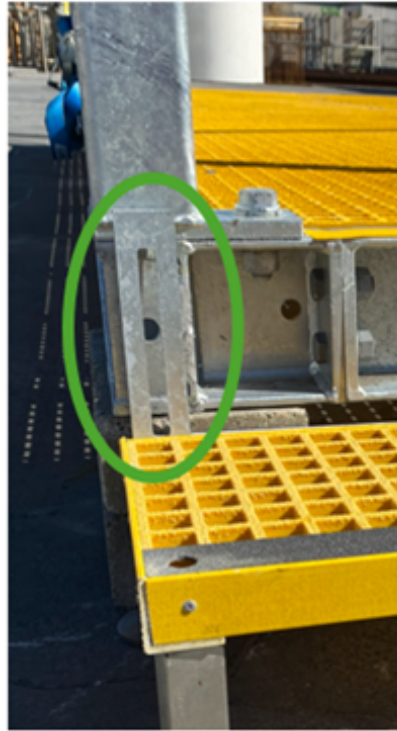


FIG 2



FIG 3

7. Construction team packing at the end of hire

Once the project has been completed, please pack the step upright (on all the feet) inside the building and use anchor points on wall (FIG 4) to secure for transport with rope (FIG5), or secure to the Coverflex unit ready for transport

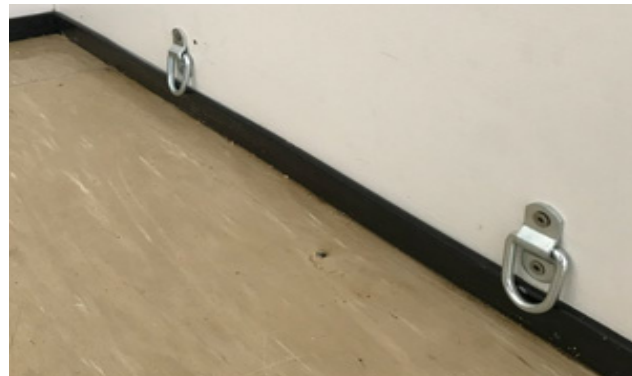


FIG 4

By following these steps, you are providing a safe, stable and accessible entry/exit point to your modular building. If you have any questions or concerns, our knowledgeable staff are here to assist you.

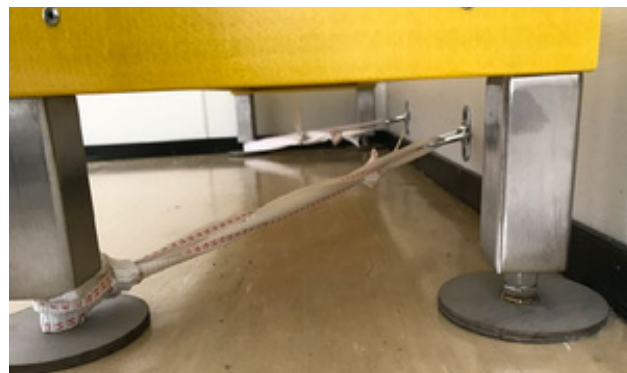


FIG 5