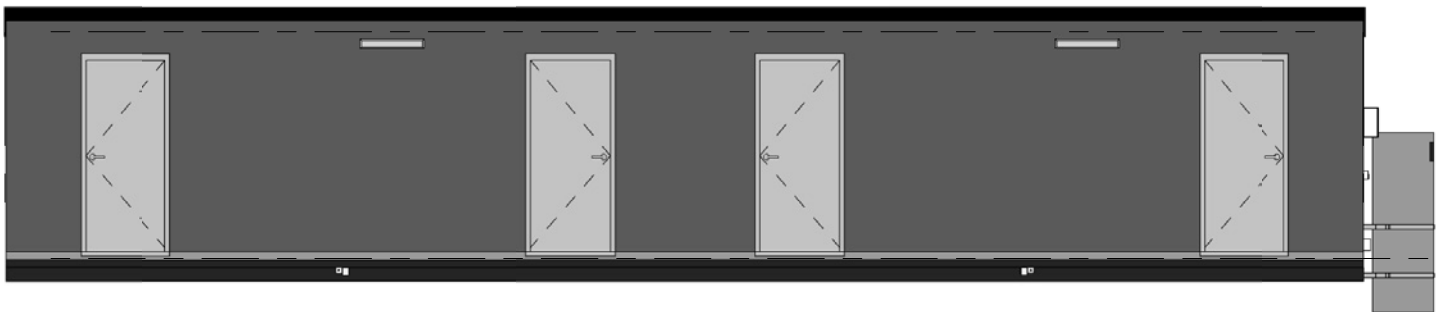


STAFF QUARTERS

4 PERSON

13 62 11
ausco.com.au

14.4 X 3.25



SQ41432



STANDARD INCLUSIONS:

- > 4 separate living quarters, each containing:
 - 1 external plain metal doors 2043 x 886
 - 3 windows (various sizes) with flyscreens and obscured glazing to bathroom
 - 2 diffused LED lights
 - 3 double power points (10A) & 1 telephone point
 - 1 single bed
 - 1 810mm flat screen TV
 - Wardrobe, bedside unit, bench style desk & chair
 - 1 vitreous china toilet suite
 - 1 Showers, 1050x900x2040 with shower head & flick mixer (H&C)
 - 1 stainless steel basins with flick mixer (H&C)
- > 1 270L 3.6kW hot water system

STANDARD FINISHES:

Exterior:

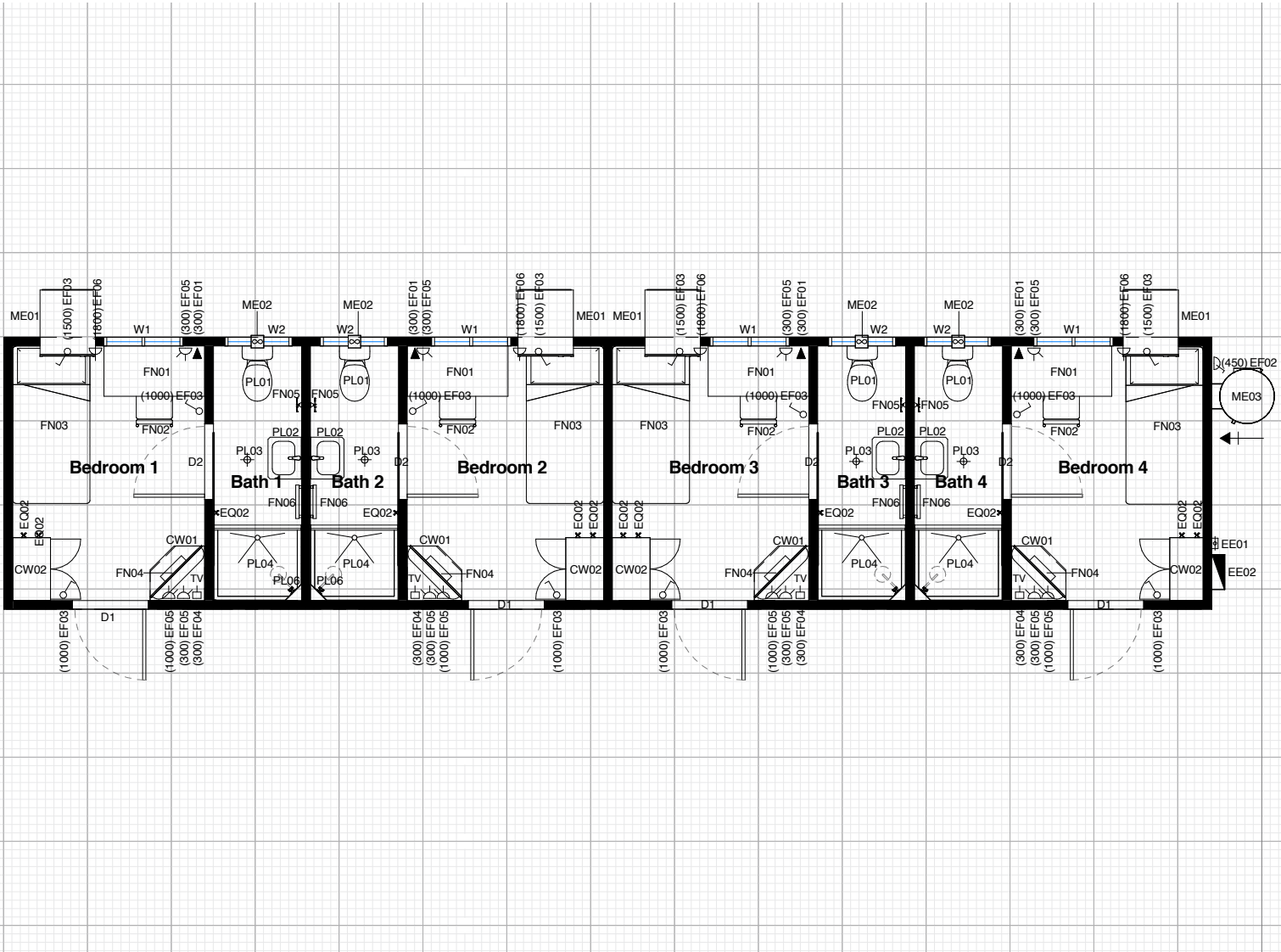
- > Trimdeck® roof cladding (Surfmist)
- > CCS Mesa cladding to exterior walls (Merino)
- > R1.5 glasswool batts (ceiling), R2.0 glasswool batts (walls)

Interior:

- > Pre-finished polyester plywood linings to ceilings (Mirage Pearl)
- > Pre-finished polyester plywood linings to walls (White Smoke)
- > Seamless Armstrong vinyl to bedrooms (Neutral Grey), Non slip vinyl floor coverings to bathrooms (Sand Grey)

STAFF QUARTERS 4 PERSON

14.4 X 3.25



1m

OTHER DESIGN OPTIONS

At Ausco, we understand that you may want to tailor your building to the unique needs of your business. For information about structural, complexing and design options available (including finishes, fixtures, fittings and cladding options) for this building, please contact your local Ausco representative.

13 62 11
ausco.com.au

