

We create the space. You create the future.



Find out why more education providers are making the change to modular learning facilities.



What is Modular Construction

Innovative and functional educational facilities

Modular construction has revolutionised the building process, with factory-controlled quality, reduced construction schedules and a smarter use of materials making it considerably less disruptive at your school and more sustainable than conventional techniques.

Hire or buy

Working with us, you'll have complete control in creating a building that works for your school. Every job we work on – be it a short-term hire of a single classroom or the construction of a major learning environment that will stand the test of time gets treated with the same high level of care, attention and detail.

- > Single and multi-storey options
- > Customised and highly configurable spaces
- > Minimal disruption to your school
- > Work with our expert architects or we can work with your architect
- > Long lasting, quality materials

Full turnkey

It's not just the buildings we can provide. With our large range of optional add-on products and services, when you hire or buy a building from Ausco you'll be up and running in no time.



**Refurbishment
& renovations**



**Ramps
& stairs**



Decks



Air con



**Soundproofing
& more**

Have your facilities faster and with less site disruption



Time-Saving

Modular construction has the advantage of saving you money, time and effort and generate a faster return on investment.

Quality

We are experts in education and our architects ensure the latest learning pedagogy is embedded in our designs.

Our buildings are designed, engineered, manufactured and maintained to Australian building standards. All locations are accredited to the Australian Quality Standard AS/NZS ISO 9001:2015 Quality Management Systems.

Environment

All sites have environmental management plans covering waste, water and energy management. Our design practices reduce the overall quantity of materials used. All sites are accredited to AS/NZS ISO 14001:2015 Environmental Management Systems.

Health and safety

We are experts in education and our architects ensure the latest learning pedagogy is embedded in our designs.

All our sites are accredited to AS/NZS ISO 45001:2018 Occupational Health and Safety Management Systems. Dedicated health and safety managers aim to constantly improve performance.



Why choose Ausco Modular?

For 60 years, we have proudly served the needs of the education sector. Changing demographics, renovations or emergencies require swift responses and we are ready to help.

Modular space can answer the call quickly and effectively. Our team has the experience, expertise, range of products and services you can rely upon when making critical decisions about your learning environment.



We can work to your existing and future education project needs from childcare to adult learning centres, considering everything from infrastructure to technology.



**Design &
manufacturing**



Installation



**Relocation &
refurbishment**



Transport



**Wide range
of products
& services**

Temporary Learning spaces

Temporary space for hire when and where you need it

Portable, prefabricated buildings allow significant flexibility, thanks to their modular design. They are ideal for fluctuating enrolments where you need to add or subtract buildings.

When temporary space is needed, you can confidently follow the lead of hundreds of schools throughout Australia and call Ausco Modular. We manage everything from transport, installation to removals and relocations.

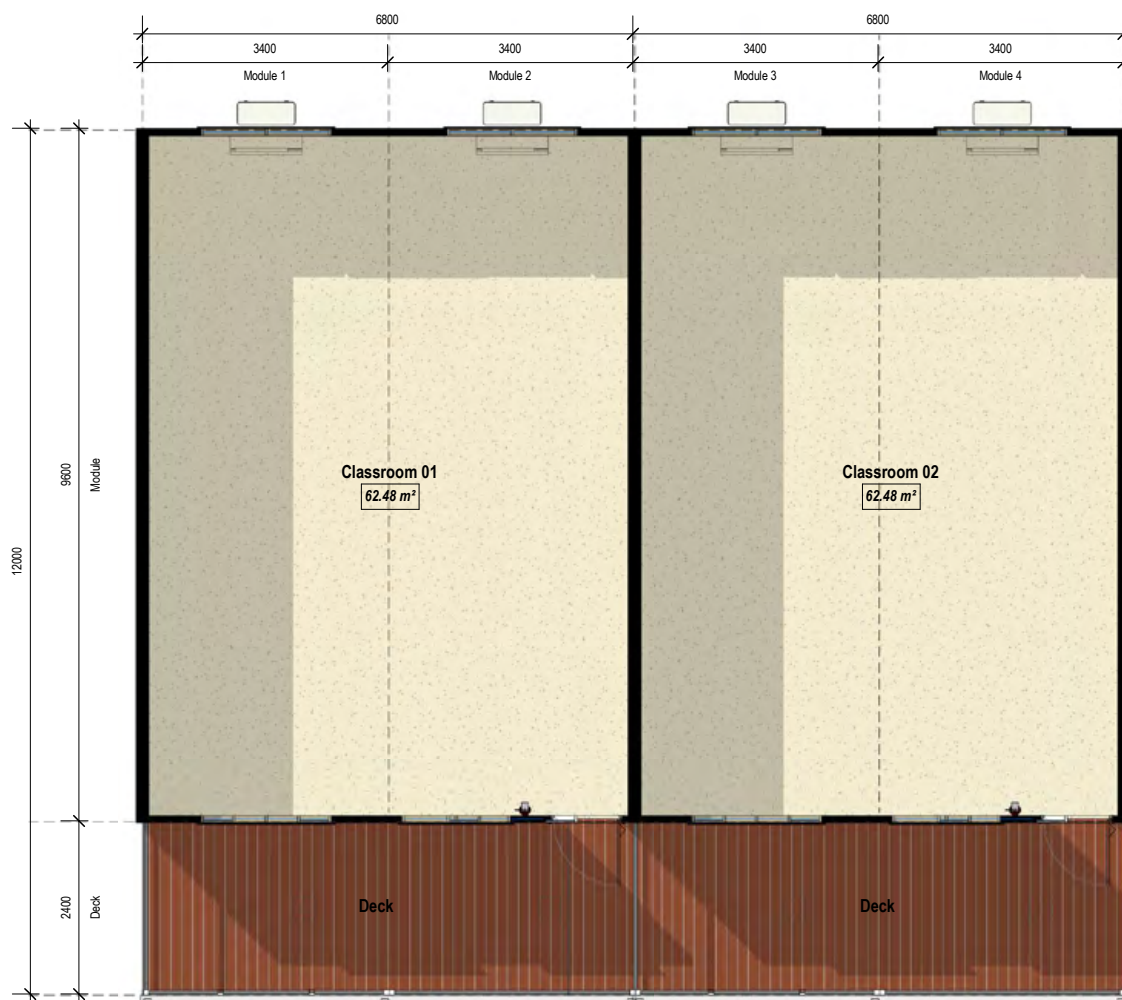
- > Temporary facilities, permanent feel
- > Enrolment fluctuations
- > Emergency space
- > Flexible layouts
- > Sustainability
- > Accessibility and equality
- > Full turn key solutions, including project management



Innovation by design | spaces for hire



Functional and flexible floor plans



Temporary Classrooms Floor Plan

Please note floor plan is not to scale.

Our temporary classrooms come in 2 modules of 12x3.4m, verandah and deck. The modules can be added as required to fit your space requirements.

Permanent Learning spaces

Permanent space solutions for sale

When a permanent solution is required, we have a range of designs to choose from, or we can discuss design & construct along with customisation options to help your new facilities blend seamlessly into your existing infrastructure and in accordance with your budget.

Our buildings can easily be fitted out to function as classrooms, libraries, manual arts facilities, music rooms, gymnasiums, labs and sports halls.



Benefits

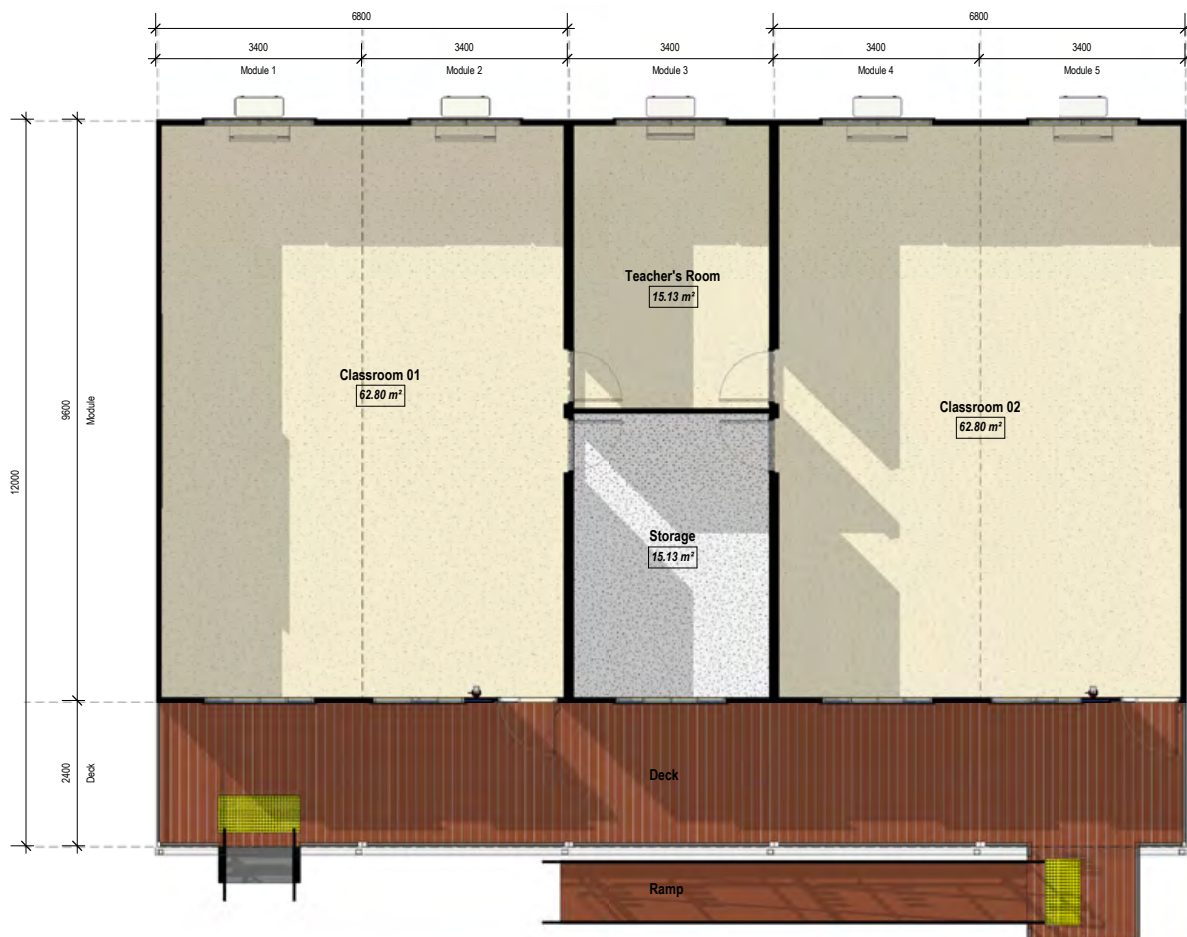
- > Reduced impact to School/Reduced time on site
- > Integration with existing buildings
- > Remote project solutions
- > Tight site access
- > Quality and warranties equal to traditional construction
- > Futureproofing
- > Modern, integrative learning spaces
- > Sustainability
- > Accessibility and equality
- > Full turnkey and certification
- > Project Management
- > Tailored solutions through our 360 range of value-added products and services.



Innovation by design | permanent education spaces



Functional and flexible floor plans

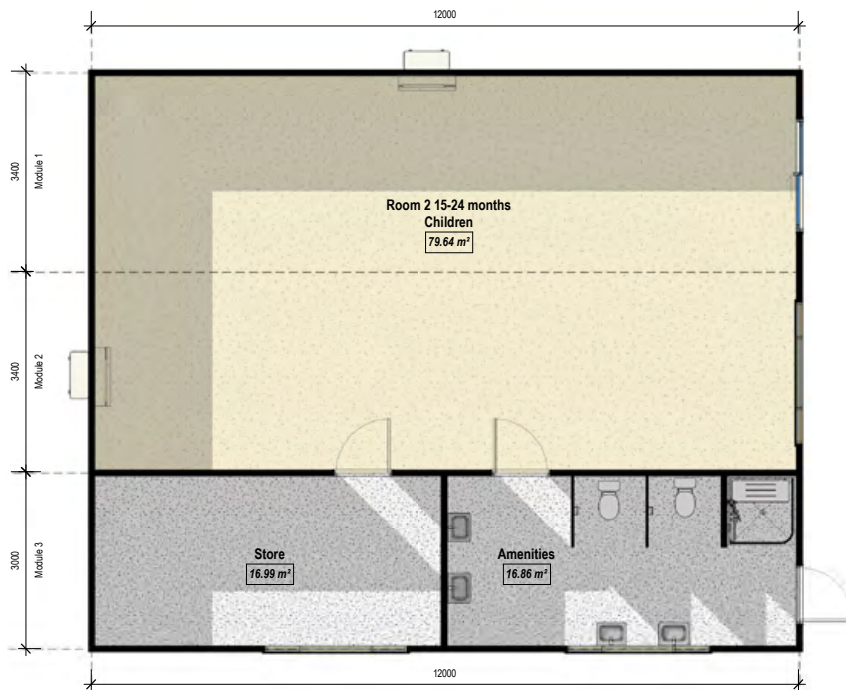


Permanent Classrooms Floor Plan Sample

Please note floor plan is not to scale.

Choose from our standard size modules and make them your own or we can custom design your education space to suit your specific requirements.

Functional and flexible floor plans



Permanent Early Learning / Childcare Centres Floor Plan Sample



Permanent Early Learning / Childcare Centres Floor Plan Sample

Case studies



Balaklava High School

> Permanent Facilities



LOCATION
Balaklava, SA



TIMEFRAME

8 months

> From concept to time on site



CLIENT

Department for Education



ARCHITECT

Das Studio



SIZE

655m²

In need of a building solution that was time sensitive, Sensum SA on behalf of the Department for Education, worked with Ausco Modular to prioritise upgrades and ensure infrastructure was complete in time for year 7 students to begin high school by 2022. The 850m² facilities cover two foot prints including a new modular building encompassing general learning areas, breakout spaces, art rooms and storage, teacher preparation areas, and access toilet. The second area features a central suspended concrete breakout space.

The aim of the project was to create a collaborative learning environment for students that enabled an uninterrupted flow between the internal and external spaces. As principal contractor, Ausco ensured a safe work environment, occurring throughout school operational hours, complete with demolition of aging infrastructure and new landscaping to disturbed areas. The handover delivered a great facility with the ability to serve the needs of the growing school community now and into the future.

Eumundi State School

> Temporary Facilities



LOCATION
Eumundi, QLD



TIMEFRAME
2 months



CLIENT
Eumundi State School



ARCHITECT
Ausco Modular



SIZE
165.6m²

Eumundi State School, a reputed school that has been providing education to the local children for more than 100 years, was in need of two new classrooms to accommodate the growing number of students.

With an influx of new students due in 2019 and nowhere to put them, Eumundi State School faced a familiar challenge. New classrooms were required, however the existing building footprint meant there was no easy site to locate the new buildings.

Ultimately, Eumundi needed to make a difficult choice – sacrifice some oval space or choose to build on a difficult site. As school populations continue to increase, this is a challenge faced by many.

Fortunately, Eumundi State School was able to retain access to their school oval by choosing to build on a difficult, sloping site.

The design developed in conjunction with Ausco Modular used a clever counter lean system of footings that ultimately allowed the school to gain both additional space for new students and retain its precious oval space.

The building has been designed in such a way that it allows safe and easy ingress, maximizing the usable space around the new classrooms and placement of essential services such as air conditioning compressors safely out of the way.

In doing so, Eumundi State School have added the buildings necessary to service their growing student population and retained the use of their oval – a win-win outcome!



Works were completed on site without disruption to the school's normal operations, and even better, the full turnkey solution was delivered a full two weeks ahead of schedule - allowing Eumundi's students to kick off their school year without distraction of having to move classrooms mid way through term.





Noble Park English Language School

> Permanent Facilities



CLIENT
Sensum Group



LOCATION
Noble Park, VIC



TIMEFRAME
24 months
> From concept to time on site



ARCHITECT
Ausco Modular



SIZE
742.5m²

Did you know? Bright blue balanced with warmer colours is well suited for challenging learning situations and can help improve reading comprehension and productivity!

Featured here at Noble Park English Language School's recently completed modular upgrade.

The school provides an intensive English language course for newly arrived migrants, refugees and international students from non-English speaking backgrounds.

This \$2.5m modular upgrade was part of the Victorian School Building Authority's Permanent Modular School Buildings Program.

Collaboratively you have done an amazing job. You put much effort, time, skills and energy to make sure that the building is safe and comply with OHS standards.

Innes Gvozdenko, Acting Principal

The Goldfields Childcare Centre

> Permanent Facilities



LOCATION
Kalgoorlie, WA



TIMEFRAME
6 months
> From concept to time on site



CLIENT
The Goldfields Childcare Centre



ARCHITECT
Ausco Modular



SIZE
270m²

Faced with booming demand for childcare and out of school hours care, the Goldfields Childcare Centre (GCCC) located in Kalgoorlie-Boulder WA needed to add extra facilities in a hurry. The large and growing number of working families were struggling with long waiting periods to find suitable care, and the GCCC was keen to expand their existing service to better cater for their local community.

Challenged with a timeframe of only four months to raise funds for a new facility following an unsuccessful Federal Government funding application, the GCCC sought donations from the WA State Government, the City of Kalgoorlie-Boulder council, local mining companies and other sponsors to fund the project.

Ausco Modular's local Kalgoorlie branch worked closely with the GCCC's staff and Ausco's Perth-based manufacturing facility team to achieve a light-filled, open space for the children to enjoy.

Modular was the chosen building method due to benefits such as speed, price and the ability to relocate the building in the future if warranted. The new facility was designed in collaboration with Ausco's in-house design team with a focus on a robust interior design suitable to house multiple children from pre-kindy age to Year 6.

The final product is a modern, eye-catching 270m² facility which includes two large, colourful play areas.

The GCCC's Director Rachael Barton is delighted with the final product.

"From meeting with Adam in Kalgoorlie to working alongside Rod in Perth, Ausco achieved my vision and more," said Ms Barton.

"Ausco Modular is proud of our ability to work with our customers to deliver a fit-for-purpose building, designed to a budget that suits the client," reiterated Stuart McNaughton, Ausco Modular's WA Construction Manager.

"The building is only limited to the client's imagination."



"Extremely happy with the full process. From meeting with Adam in Kalgoorlie to working alongside Rod in Perth, Ausco achieved my vision and more."

Rachael Barton, GCCC Director

Sunshine Coast University Hospital - Childcare Facility

> Permanent Facilities



CLIENT
SCUH Childcare



LOCATION
Sunshine Coast, QLD



TIMEFRAME
2 months
> From concept to time on site



ARCHITECT
Ausco Modular



SIZE
1200m²

Ausco was delighted to work with Lendlease on the delivery of a 100-place childcare centre, located on Level 7 of the main multi-deck carpark for the new Sunshine Coast University Hospital.

- > This project came with several key challenges:
- > A requirement to work alongside other trades on-site
- > Meeting working at height safety regulations
- > Providing a seamless blend between the existing facade and the design of the child care centre
- > Remaining flexible with construction times

The flexibility of the modular product meant Ausco was well placed to provide the right services for this unique project, which included a full turn-key installation.

As with all of Ausco's products, the child care centre was built off-site which minimised any impact on the construction site. The building structure, design and appearance blended well with existing facades and is equal in quality to an in-situ version.

The construction process took only eight weeks and was cost-effective and efficient for the client.

The service connections in the modular building were designed to link seamlessly with the carpark services and positioned for easy access to maintenance points.

The new Sunshine Coast University Hospital opened in April 2017 and has revolutionised healthcare in the region.



Modular construction was an ideal solution to a multi-storey car park installation.



Testimonials



"Extremely happy with the whole process. From meeting with Adam in Kalgoorlie to working alongside Rod in Perth, Ausco achieved my vision and more."

Rachel Barton

GCCC Director
Goldsfields Childcare Centre



"It was really exceptional from an education perspective to see that it was exactly how we wanted it to be and that it had been really quite pain free, so that was just fantastic."

Angela Branford

Principal
Cavalry Lutheran Primary School



"It's light, it's open, the students and staff love working in it. It has that lovely sense you're in a space that you want to be in and it's a space that embraces you and adds colour and life to the learning."

Pam Ronin

Former Principal
St Francis de Sales College



"I would recommend Ausco to schools who need high quality, purpose built additional classroom space that consider specific requirements such as ramps and disability accessible toilet facilities."

Nicole Finch

Principal
Beenleigh Special School

Call **13 61 11** to be connected to your nearest education specialist.

Visit our website **ausco.com.au** to learn more about our modular solutions.



- Manufacturing location/s
- Branch networks/s
- Stayover[®] by Ausco current network

